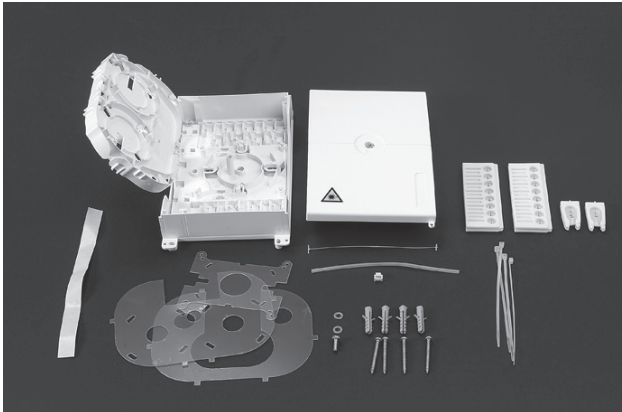


TC-818-IP
Rev A, Mar 2017
www.commscope.com

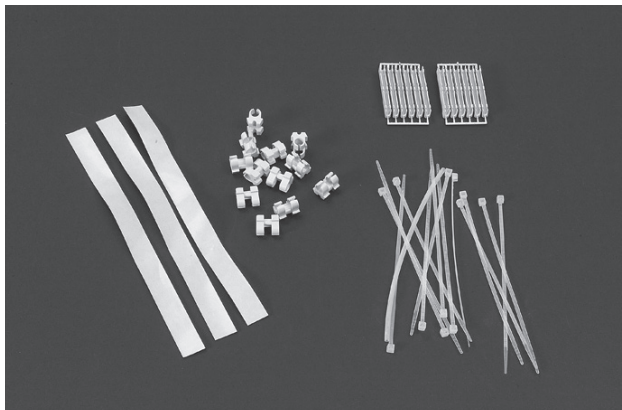
Indoor fiber distribution box

1 Kit content



- Box
- Covers
- Cable seals
- Transportation tube
- Tie-wraps
- Snap fit

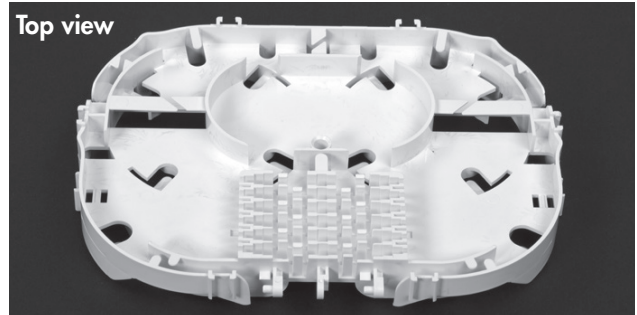
2 Kit for drop cables



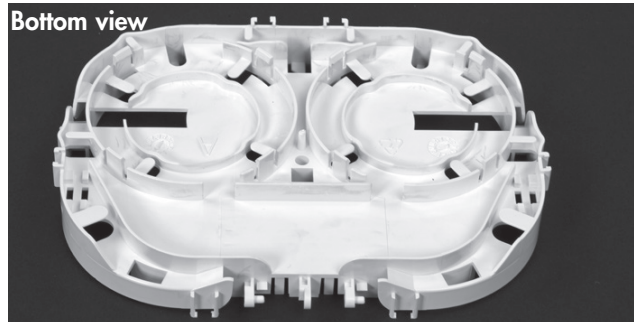
- Drop cable brackets
- Tie-wraps
- Foam strip
- Splice holder

3 Trays

Top view

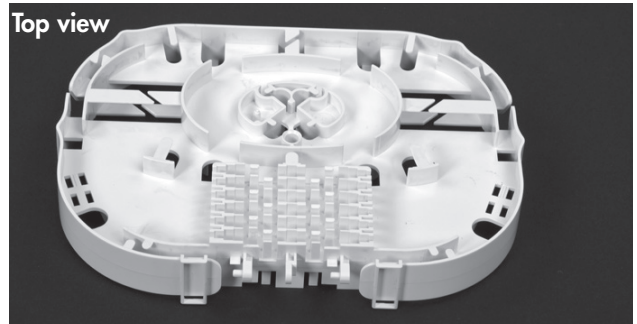


Bottom view

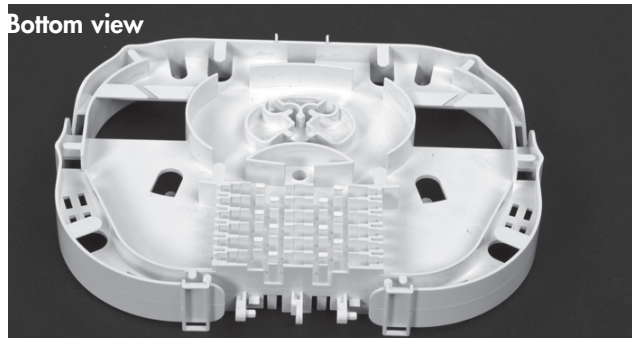


3.1 Tray with universal splice holder, capacity: 12 splices.
Option to install splitter.

Top view

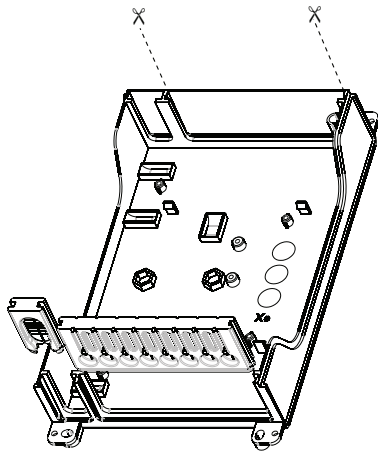


Bottom view



3.2 Tray with universal splice holder, capacity: 24 splices.
No option to install splitter.

4 General



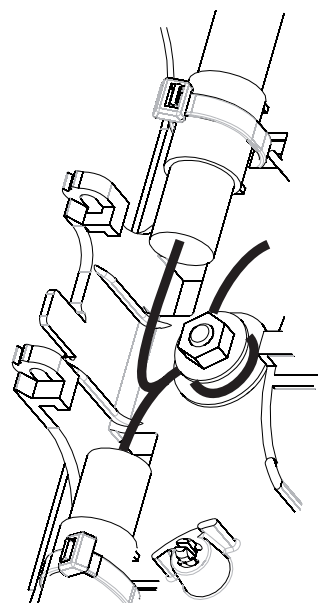
4.1 Break out the ports needed, For breaking out the ports, first cut with the scissor.

5 Preparation of the main cable

5.1 For looped cable, make a window cut by removing the outer jacket over a distance of 40 mm (in line) or 700 mm (butt). The fibers which will be used, need to be pulled up to 1500 mm.

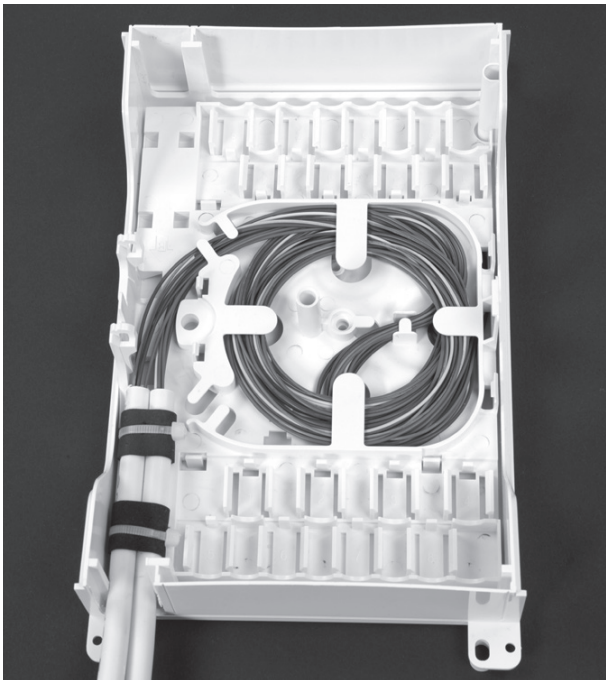
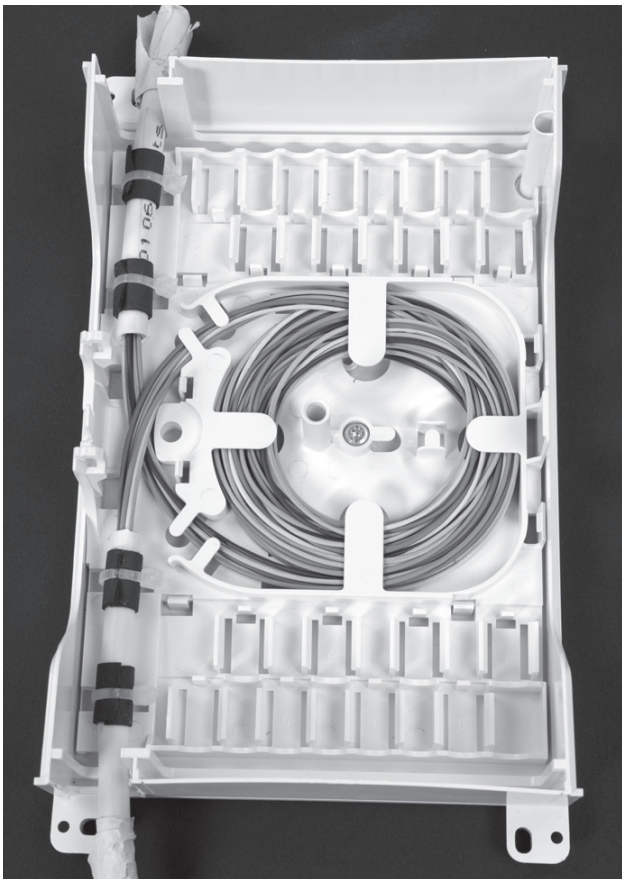


5.2 Wrap 1 layer of foam on the securing positions of the cable. Secure the cable with tie-wrap on this positions onto the box.



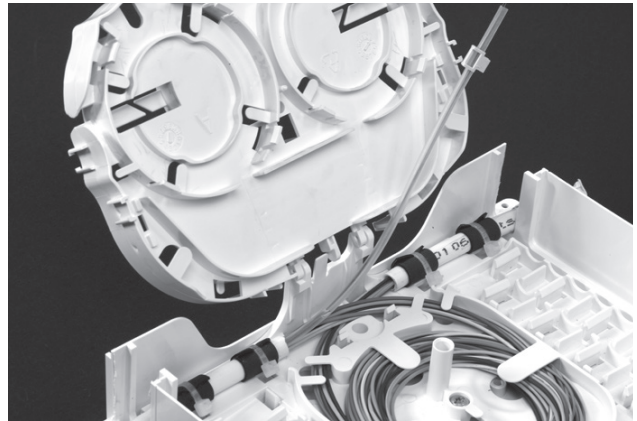
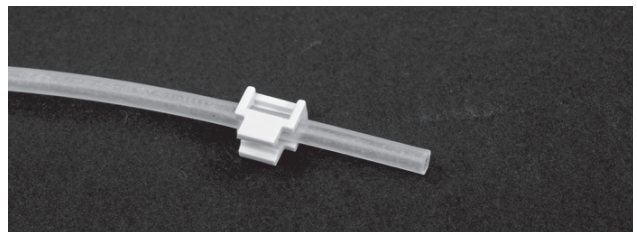
5.3 Cut the Kevlar over a length of 150 mm and terminate the Kevlar

Uncut fibers



5.4 For the uncut fibers, storage can be done in the bottom of the box (max. 700 mm).

Cutted fibers



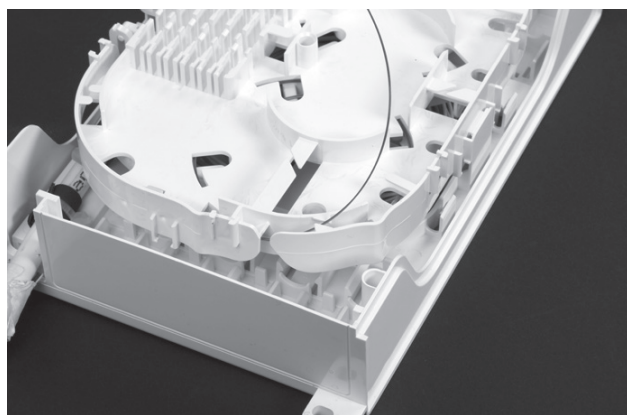
5.5 Remove the inner tube by stripping/shaving up till 20 mm from the outer jacket. Slide the snap fit over the tube, slide the fibers trough the tube. Lock the transportation tube into the securing position.

Cut fibers (to be used later)



5.6 Separate the fibers that will be used later and store them in the bottom side of the tray.

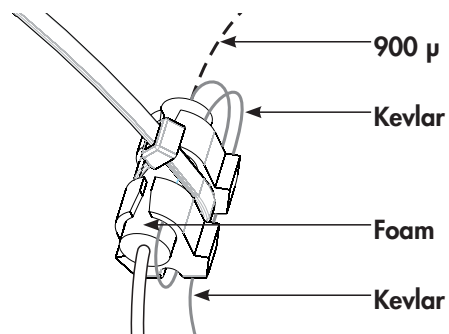
Cut fibers (to connect to the customer)



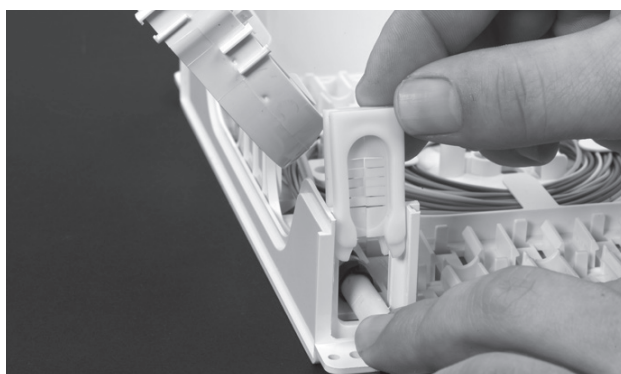
5.7 Fibers which will be spliced to the drop cables should be routed to the top side of the tray.

6 Preparation of customer cable

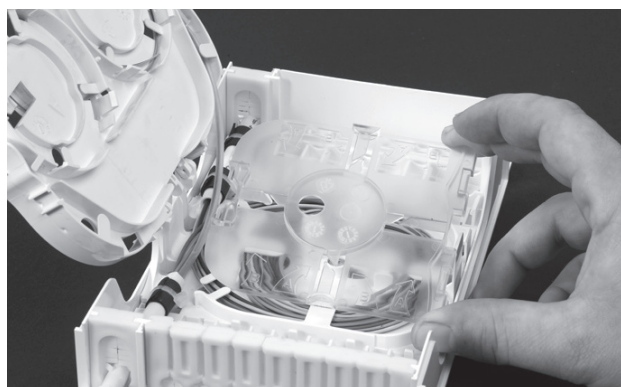
6.1 Remove the outer jacket over a distance of 1500 mm.



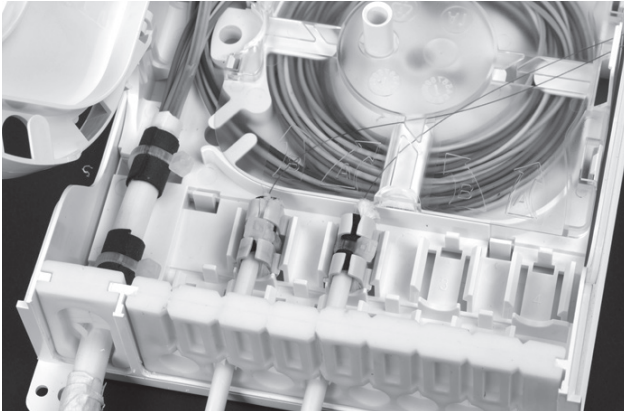
6.2 Wrap one layer of foam (20 mm) on the securing position if needed. Terminate the Kevlar by securing the cable/pigtail onto the bracket with tie-wrap. Depending the amount of Kevlar, it needs to be wrapped twice around the bracket.



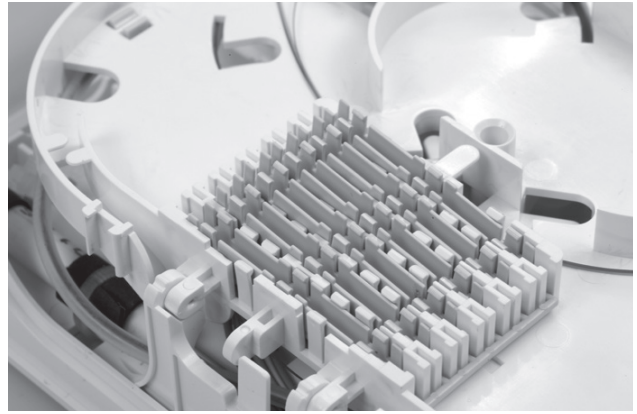
6.3 Install the seals of the box for the main as for the drop cables.



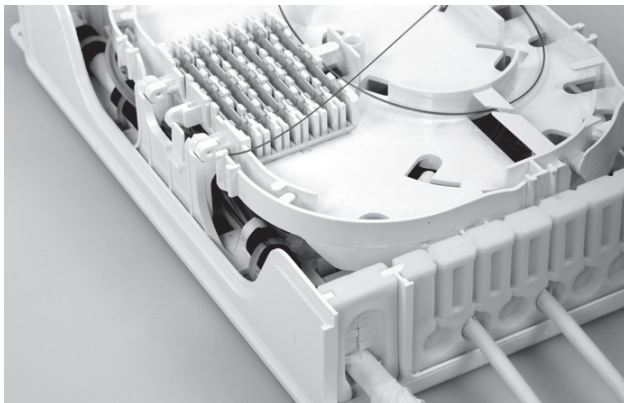
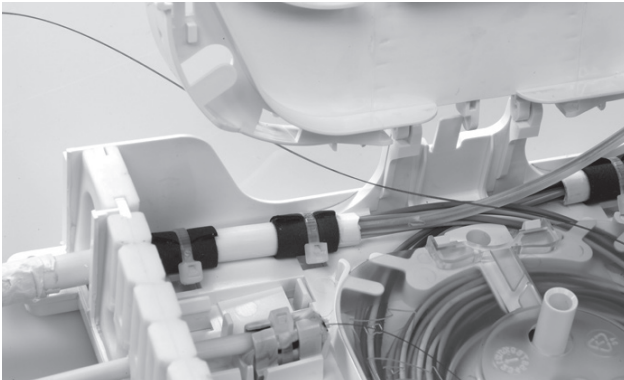
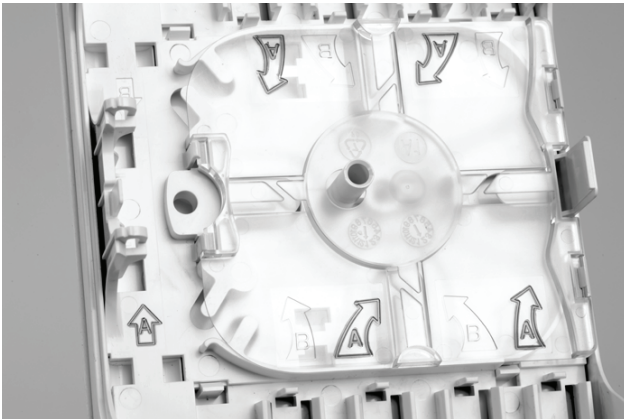
6.4 Install the cover on top of the stored uncut fibers.



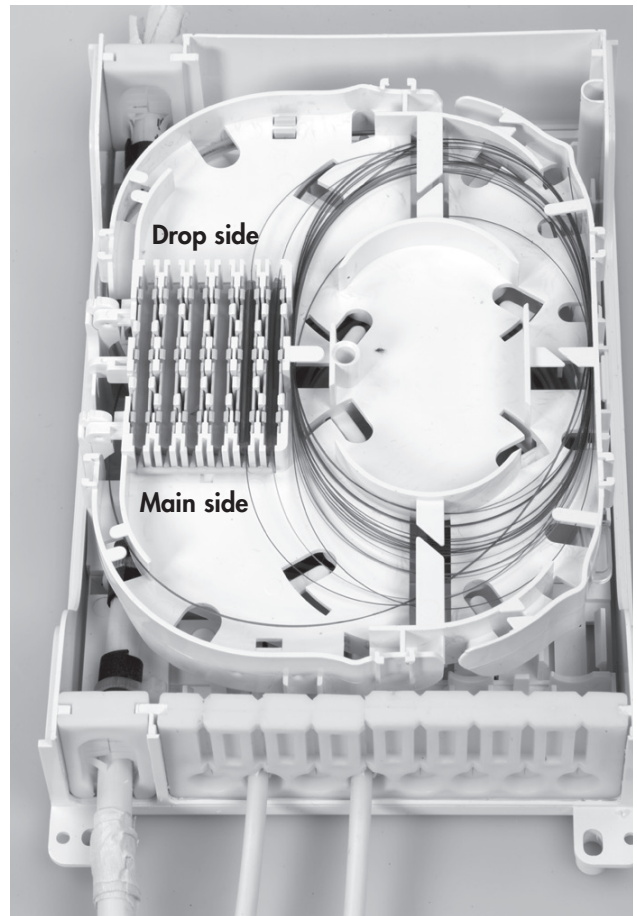
6.5 Install the drop cables into the numbered snap fit positions.



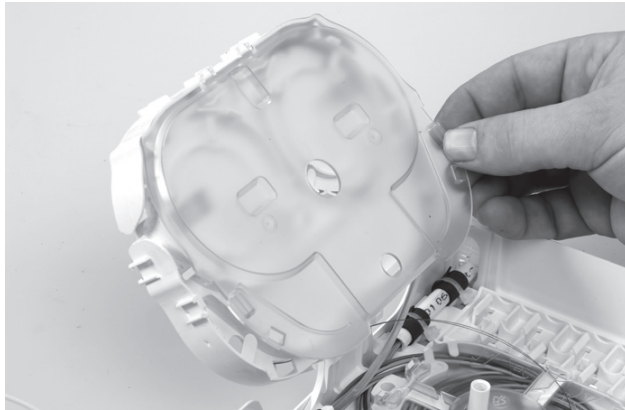
6.7 In case of SMOUV, install the insert for SMOUV into the universal splice holder.



6.6 Depending the direction A or B of the fiber from the main cable, you follow the direction A or B for routing the drop fibers to the top side of the tray (A: shown on the pictures).

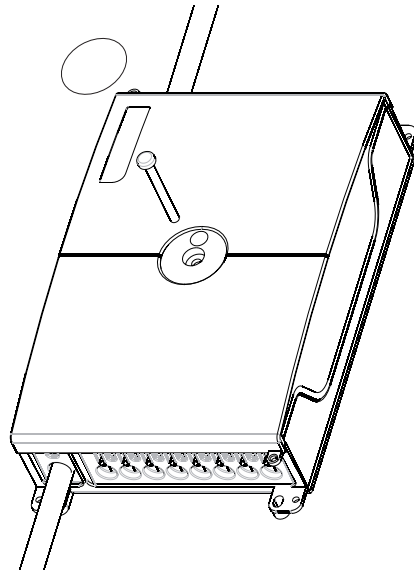


6.8 Check the orientation of the main/drop side to avoid crossings of the fibers in the storage area.

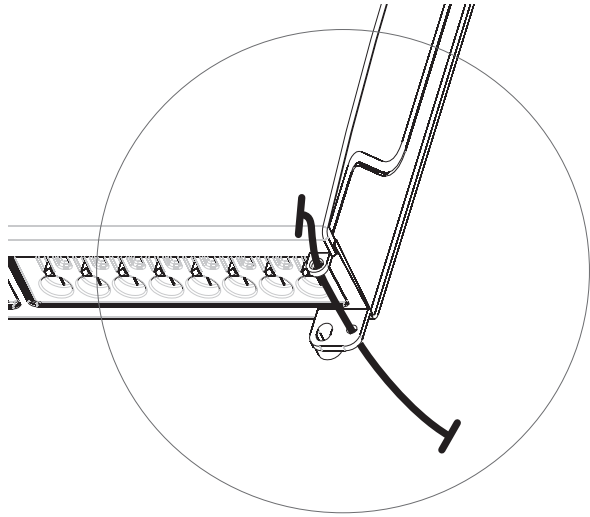


6.9 Install the covers (top/bottom) onto the tray.

7 Closing the box



7.1 Secure the cover with the screw and seal with label (optional).



7.2 Install the nylon wire to connect cover and box.

To find out more about CommScope® products, visit us on the web at www.commscope.com

For technical assistance, customer service, or to report any missing/damaged parts, visit us at:
<http://www.commscope.com/SupportCenter>

© 2017 CommScope, Inc. All rights reserved.

Kevlar and all trademarks identified by ® or ™ are registered trademarks or trademarks, respectively, of CommScope, Inc.

This document is for planning purposes only and is not intended to modify or supplement any specifications or warranties relating to CommScope products or services.

This product is covered by one or more U.S. patents or their foreign equivalents. For patents, see:
www.commscope.com/ProductPatent/ProductPatent.aspx.